

sección E:1/2

HORIZON GLASS
The product is tested in strength, stability and dynamic loads, according to UNE 85-2038-91, CTE DB SE-AE, with positive reusts in static load up to 3 kN. Patent Reg. Nº.: 2186508.

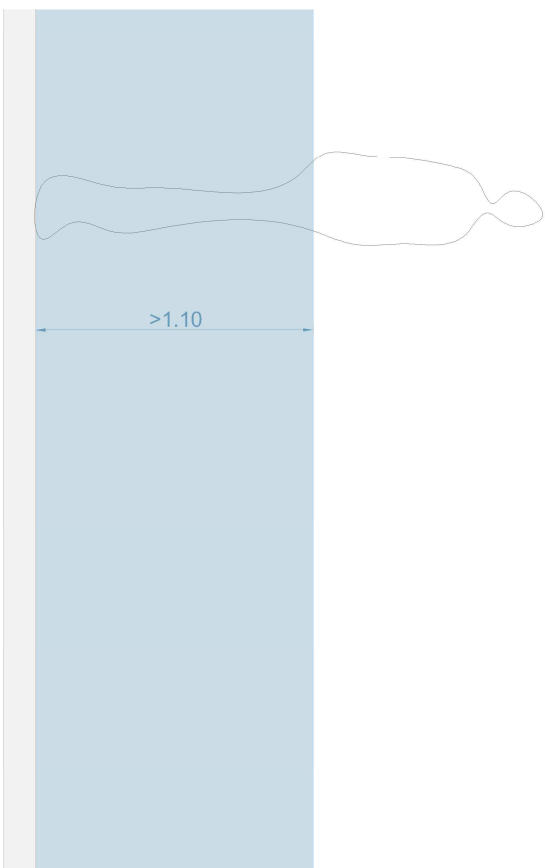
Distances and anchors presented in this document correspond to the test in laboratory.

Localization and modification of anchors out of the tested situations,, should be modified by technical project editor or the technical management of the work.

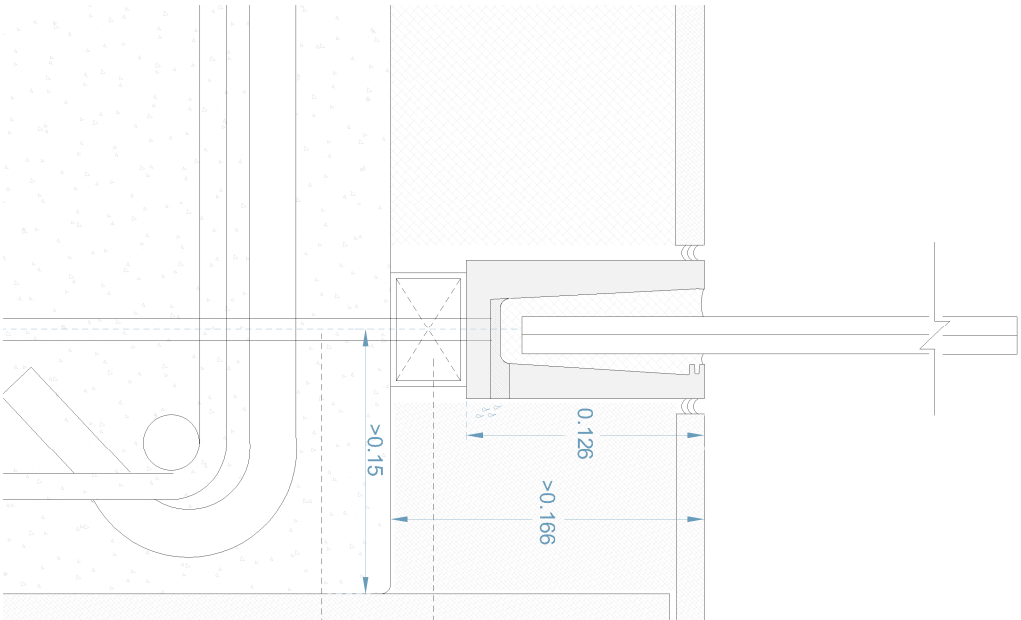
The photos appearing in this catalogue are not contractual. In its permanent concern of improvement of its products, Horizon reserve the right to modify the conception or definition of its products at any time, without prior notice.

It is the customer's responsibility to check the on-site placement of the element, specific regulations.

More information is available through our distributors and homeofhorizon.com web

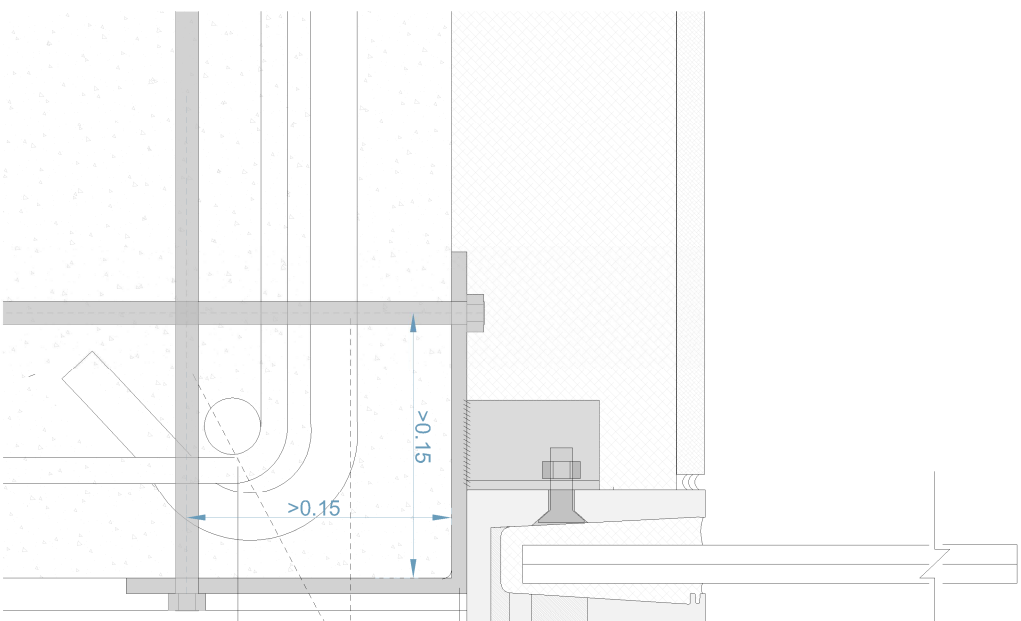


Alzado E:1/30



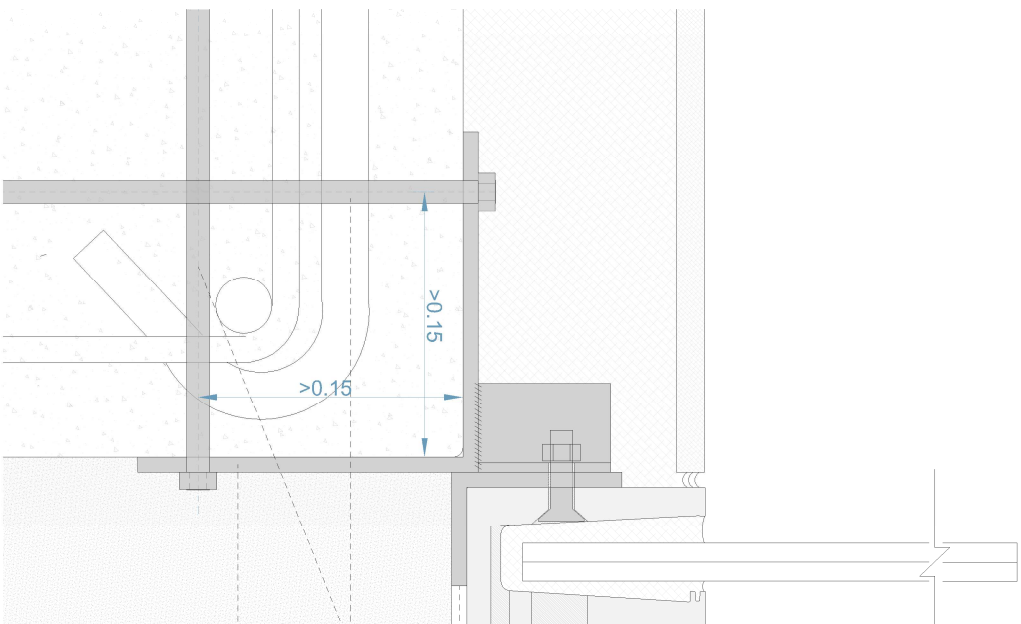
PREMARCO 50*50
VARILLA ROSCADA Ø12
L ≥300 mm
ANCLAJE EPOXI

Anclaje 01
sección E:1/4



ANGULO 60*90*8
REDONDO Ø12
L ≥300 mm
ANCLAJE EPOXI
COLLOC. TRESBOLLILLO
ANGULO 180*180*8

Anclaje 02
sección E:1/4



ANGULO 60*90*8
REDONDO Ø12
L ≥300 mm
ANCLAJE EPOXI
COLLOC. TRESBOLLILLO
ANGULO 180*180*8

Anclaje 03
sección E:1/4